



TONIGHT'S AGENDA


- 01 INTRODUCTION TO
CONSIGLI
- 02 PROGRESS UPDATE
- 03 LOOK AHEAD ACTIVITIES
- 04 BUDGET & INVOICING
- 05 INVOICE COORDINATION
- 06 SCHEDULE
- 07 Q&A

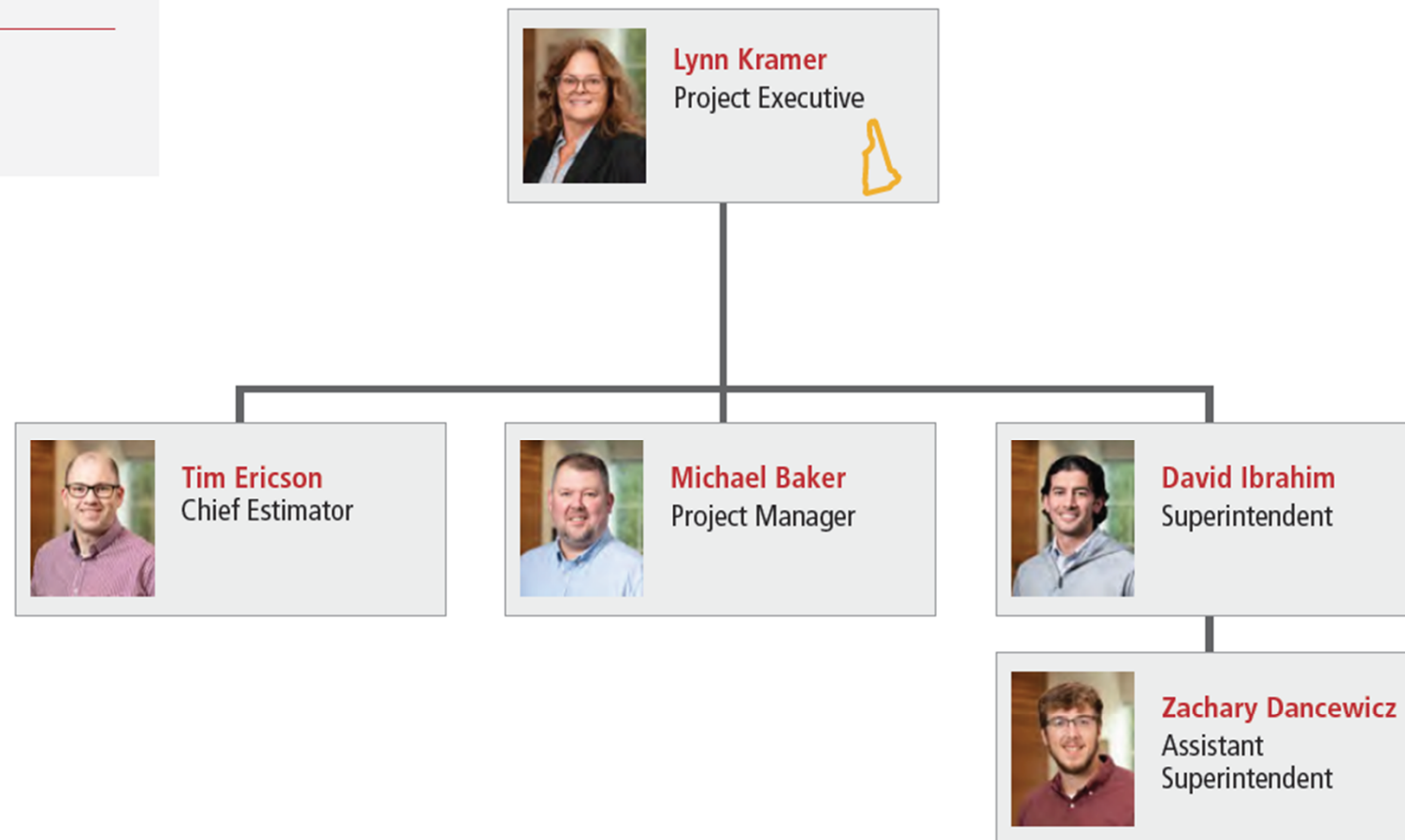


ORGANIZATIONAL STRUCTURE



KEY

 New Hampshire Resident



ADDITIONAL TEAM RESOURCES



Bryan Kingsbury, CSP
Corporate Safety
Director



Justin White
Senior Sitework
Estimator



Amanda Cerqueira
Senior Scheduling
Manager



Mike Caputo
General Superintendent



Vance Freymann
Director of Operations NH





CONSIGLI AT A GLANCE

OUR COMPANY

66 New Hampshire Employees

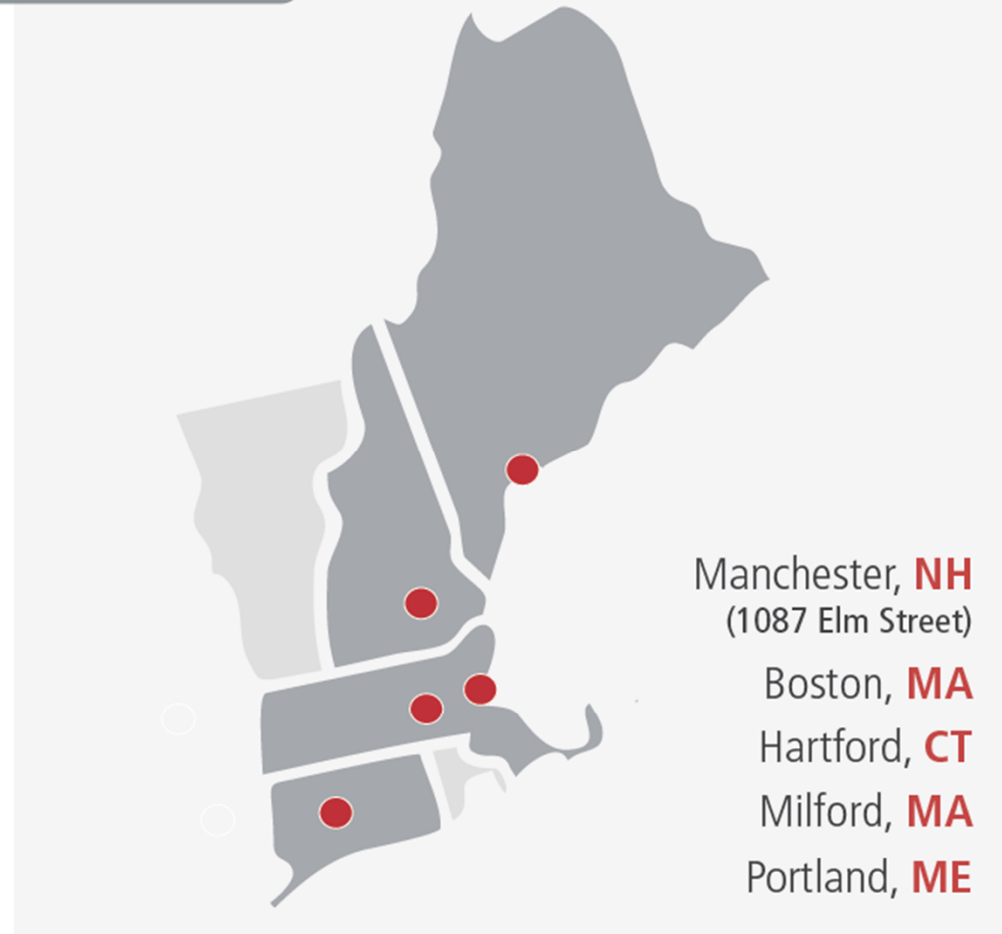
119 Years as a 5th Generation Family-led Company

60+ K-12 Projects

7 Projects with Leftfield

15 Projects with SMMA

80% Of our work is in occupied buildings/environments



Manchester, **NH**
(1087 Elm Street)

Boston, **MA**

Hartford, **CT**

Milford, **MA**

Portland, **ME**



Anthony Consigli
Chief Executive
Officer



Matthew Consigli
President



Vance Freymann
Director of
Operations - NH

NH CLIENTS

Catholic Medical Center
City of Portsmouth
Dartmouth College
Dartmouth-Hitchcock Medical Center
Exeter Hospital
Fidelity Investments
Lindt & Sprungli
Mass General Brigham at Tuscan Village
New Balance
Phillips Exeter Academy
St. Paul's School
University of New Hampshire





Activities completed within the last 30-days

- Continued development of the Priority One Budget into a LeftField format
- Continued development of the various Project schedules into a LeftField format
- Selection and award to Consigli Construction for the modular projects
- Finalization of the Consigli contract for execution
- Continued programming for the Middle schools and Beech Elementary
- Continued development of the sitework construction package for the Modular work
- Continued communication with staff and the community
- Modular shop drawings/ submittals and review continues
- Early scope coordination between Consigli and Triumph
- Refinement of the sitework package for the Modular projects
- Continued coordination with Eversource for Modular power requirements

30-Day Look-Ahead

- Continued development of the Priority One Budget into a LeftField format
- Continued development of the various Project schedules into a LeftField format
- Continued programming for the Middle schools and Beech Elementary
- Permitting review for Beech, Hillside, and Parkside to continue.
- Receive bids for Modular sitework package
- GMP development and execution for the modulares
- Continued coordination with Eversource and confirmation of lead time for pad mounted transformers
- Continued communication with all stakeholders.



Manchester Priority One Projects - Overall Budget Summary

Manchester School District - Priority One Projects

Period Ending
Invoice Summary Package
Includes GC/CM Requisition
2/29/2024
1
N/A

Current Budget



	Original Budget (A)	Budget Changes (B)	Current Budget (C)	Committed Costs (D)	Expended (E)	Unspent (F)=(D)-(E)	Remaining Budget (G)=(C)-(D)	CTC Spent/Committed (I)	Anticipated C.O.C. (J)=(D)+(I)	Variance (K)=(C)-(J)
MODULAR PROJECT										
0100 0000 ADMINISTRATION (OPM & OTHER ADMIN. COSTS)	\$245,077	\$0	\$245,077	\$245,077	\$0	\$245,077	\$0	\$0	\$245,077	\$0
0200 0000 ARCHITECTURE & ENGINEERING	\$1,690,143	\$0	\$1,690,143	\$1,690,143	\$827,432	\$862,711	\$0	\$0	\$1,690,143	\$0
0300 0000 SITE ACQUISITION	\$0	\$0	\$0	\$0	\$0	\$0	\$0	\$0	\$0	\$0
0500 0000 CONSTRUCTION CONTRACT	\$1,698,000	\$0	\$1,698,000	\$0	\$0	\$0	\$1,698,000	\$1,698,000	\$1,698,000	\$0
0600 0000 MISCELLANEOUS PROJECT COSTS	\$17,773,400	\$0	\$17,773,400	\$16,665,816	\$436,981	\$16,228,835	\$1,107,584	\$1,107,584	\$17,773,400	\$0
0700 0000 FURNISHINGS & EQUIPMENT	\$3,584,000	\$0	\$3,584,000	\$0	\$0	\$0	\$3,584,000	\$3,584,000	\$3,584,000	\$0
0800 0000 OWNER'S CONTINGENCY	\$1,251,870	\$0	\$1,251,870	\$0	\$0	\$0	\$1,251,870	\$1,251,870	\$1,251,870	\$0
MODULAR PROJECT TOTALS	\$26,242,490	\$0	\$26,242,490	\$18,601,036	\$1,264,414	\$17,336,622	\$7,641,454	\$7,641,454	\$26,242,490	\$0
BEECH STREET ELEMENTARY SCHOOL PROJECT										
0100 0000 ADMINISTRATION (OPM & OTHER ADMIN. COSTS)	\$2,057,129	\$0	\$2,057,129	\$1,926,071	\$0	\$1,926,071	\$131,058	\$131,058	\$2,057,129	\$0
0200 0000 ARCHITECTURE & ENGINEERING	\$5,095,000	\$0	\$5,095,000	\$4,945,000	\$0	\$4,945,000	\$150,000	\$150,000	\$5,095,000	\$0
0300 0000 SITE ACQUISITION	\$0	\$0	\$0	\$0	\$0	\$0	\$0	\$0	\$0	\$0
0500 0000 CONSTRUCTION CONTRACT	\$58,196,935	\$0	\$58,196,935	\$0	\$0	\$0	\$58,196,935	\$58,196,935	\$58,196,935	\$0
0600 0000 MISCELLANEOUS PROJECT COSTS	\$450,000	\$0	\$450,000	\$0	\$0	\$0	\$450,000	\$450,000	\$450,000	\$0
0700 0000 FURNISHINGS & EQUIPMENT	\$2,348,800	\$0	\$2,348,800	\$0	\$0	\$0	\$2,348,800	\$2,348,800	\$2,348,800	\$0
0800 0000 OWNER'S CONTINGENCY	\$5,963,970	\$0	\$5,963,970	\$0	\$0	\$0	\$5,963,970	\$5,963,970	\$5,963,970	\$0
BEECH STREET ELEMENTARY SCHOOL PROJECT TOTALS	\$74,111,834	\$0	\$74,111,834	\$6,871,071	\$0	\$6,871,071	\$67,240,763	\$67,240,763	\$74,111,834	\$0
HILLSIDE MIDDLE SCHOOL PROJECT										
0100 0000 ADMINISTRATION (OPM & OTHER ADMIN. COSTS)	\$1,017,155	\$0	\$1,017,155	\$976,626	\$0	\$976,626	\$40,529	\$40,529	\$1,017,155	\$0
0200 0000 ARCHITECTURE & ENGINEERING	\$3,887,500	\$0	\$3,887,500	\$3,737,500	\$0	\$3,737,500	\$150,000	\$150,000	\$3,887,500	\$0
0300 0000 SITE ACQUISITION	\$0	\$0	\$0	\$0	\$0	\$0	\$0	\$0	\$0	\$0
0500 0000 CONSTRUCTION CONTRACT	\$43,527,708	\$0	\$43,527,708	\$0	\$0	\$0	\$43,527,708	\$43,527,708	\$43,527,708	\$0
0600 0000 MISCELLANEOUS PROJECT COSTS	\$250,000	\$0	\$250,000	\$0	\$0	\$0	\$250,000	\$250,000	\$250,000	\$0
0700 0000 FURNISHINGS & EQUIPMENT	\$3,520,000	\$0	\$3,520,000	\$0	\$0	\$0	\$3,520,000	\$3,520,000	\$3,520,000	\$0
0800 0000 OWNER'S CONTINGENCY	\$4,601,489	\$0	\$4,601,489	\$0	\$0	\$0	\$4,601,489	\$4,601,489	\$4,601,489	\$0
HILLSIDE MIDDLE SCHOOL PROJECT TOTALS	\$56,803,852	\$0	\$56,803,852	\$4,714,126	\$0	\$4,714,126	\$52,089,726	\$52,089,726	\$56,803,852	\$0
MCLAUGHLIN MIDDLE SCHOOL PROJECT										
0100 0000 ADMINISTRATION (OPM & OTHER ADMIN. COSTS)	\$1,017,155	\$0	\$1,017,155	\$976,626	\$0	\$976,626	\$40,529	\$40,529	\$1,017,155	\$0
0200 0000 ARCHITECTURE & ENGINEERING	\$3,832,500	\$0	\$3,832,500	\$3,682,500	\$0	\$3,682,500	\$150,000	\$150,000	\$3,832,500	\$0
0300 0000 SITE ACQUISITION	\$0	\$0	\$0	\$0	\$0	\$0	\$0	\$0	\$0	\$0
0500 0000 CONSTRUCTION CONTRACT	\$28,827,403	\$0	\$28,827,403	\$0	\$0	\$0	\$28,827,403	\$28,827,403	\$28,827,403	\$0
0600 0000 MISCELLANEOUS PROJECT COSTS	\$250,000	\$0	\$250,000	\$0	\$0	\$0	\$250,000	\$250,000	\$250,000	\$0
0700 0000 FURNISHINGS & EQUIPMENT	\$3,200,000	\$0	\$3,200,000	\$0	\$0	\$0	\$3,200,000	\$3,200,000	\$3,200,000	\$0
0800 0000 OWNER'S CONTINGENCY	\$3,161,130	\$0	\$3,161,130	\$0	\$0	\$0	\$3,161,130	\$3,161,130	\$3,161,130	\$0
MCLAUGHLIN MIDDLE SCHOOL PROJECT TOTALS	\$40,288,188	\$0	\$40,288,188	\$4,659,126	\$0	\$4,659,126	\$35,629,062	\$35,629,062	\$40,288,188	\$0
PARKSIDE MIDDLE SCHOOL PROJECT										
0100 0000 ADMINISTRATION (OPM & OTHER ADMIN. COSTS)	\$1,101,287	\$0	\$1,101,287	\$1,057,381	\$0	\$1,057,381	\$43,907	\$43,907	\$1,101,287	\$0
0200 0000 ARCHITECTURE & ENGINEERING	\$3,927,500	\$0	\$3,927,500	\$3,777,500	\$0	\$3,777,500	\$150,000	\$150,000	\$3,927,500	\$0
0300 0000 SITE ACQUISITION	\$0	\$0	\$0	\$0	\$0	\$0	\$0	\$0	\$0	\$0
0500 0000 CONSTRUCTION CONTRACT	\$36,146,140	\$0	\$36,146,140	\$0	\$0	\$0	\$36,146,140	\$36,146,140	\$36,146,140	\$0
0600 0000 MISCELLANEOUS PROJECT COSTS	\$250,000	\$0	\$250,000	\$0	\$0	\$0	\$250,000	\$250,000	\$250,000	\$0
0700 0000 FURNISHINGS & EQUIPMENT	\$3,200,000	\$0	\$3,200,000	\$0	\$0	\$0	\$3,200,000	\$3,200,000	\$3,200,000	\$0
0800 0000 OWNER'S CONTINGENCY	\$3,877,019	\$0	\$3,877,019	\$0	\$0	\$0	\$3,877,019	\$3,877,019	\$3,877,019	\$0
PARKSIDE MIDDLE SCHOOL PROJECT TOTALS	\$48,501,946	\$0	\$48,501,946	\$4,834,881	\$0	\$4,834,881	\$43,667,066	\$43,667,066	\$48,501,946	\$0
SOUTHSIDE MIDDLE SCHOOL PROJECT										
0100 0000 ADMINISTRATION (OPM & OTHER ADMIN. COSTS)	\$1,101,287	\$0	\$1,101,287	\$1,057,381	\$0	\$1,057,381	\$43,907	\$43,907	\$1,101,287	\$0
0200 0000 ARCHITECTURE & ENGINEERING	\$3,917,500	\$0	\$3,917,500	\$3,767,500	\$0	\$3,767,500	\$150,000	\$150,000	\$3,917,500	\$0
0300 0000 SITE ACQUISITION	\$0	\$0	\$0	\$0	\$0	\$0	\$0	\$0	\$0	\$0
0500 0000 CONSTRUCTION CONTRACT	\$46,685,769	\$0	\$46,685,769	\$0	\$0	\$0	\$46,685,769	\$46,685,769	\$46,685,769	\$0
0600 0000 MISCELLANEOUS PROJECT COSTS	\$250,000	\$0	\$250,000	\$0	\$0	\$0	\$250,000	\$250,000	\$250,000	\$0
0700 0000 FURNISHINGS & EQUIPMENT	\$3,200,000	\$0	\$3,200,000	\$0	\$0	\$0	\$3,200,000	\$3,200,000	\$3,200,000	\$0
0800 0000 OWNER'S CONTINGENCY	\$4,897,135	\$0	\$4,897,135	\$0	\$0	\$0	\$4,897,135	\$4,897,135	\$4,897,135	\$0
SOUTHSIDE MIDDLE SCHOOL PROJECT TOTALS	\$60,051,691	\$0	\$60,051,691	\$4,824,881	\$0	\$4,824,881	\$55,226,811	\$55,226,811	\$60,051,691	\$0
GRAND TOTAL MANCHESTER PRIORITY ONE PROJECTS	\$306,000,000	\$0	\$306,000,000	\$44,505,119	\$1,264,414	\$43,240,705	\$261,494,881	\$261,494,881	\$306,000,000	\$0



Invoice Summary for Period Ending March 2024

Manchester Priority One Projects

Modular/Beech St. ES/Hillside MS/McLaughlin MS/Parkside MS/Southside MS - Invoice Approval Summary

Date 3/15/2024

Period Ending: 2/29/2024

Leftfield Invoice Summary #: 1

Project	Invoice #	Invoice Date	Contractor/Vendor	Amount
Modular	App #2	2/29/2024	Triumph Modular - February 2024 Modular Services	\$77,352.82
Total to Pay to Triumph Modular:				\$77,352.82
Modular	60896	3/14/2024	SMMA - Modular - RFP	\$30,000.00
Modular	60896	3/14/2024	SMMA - Modular - Site Packages	\$168,000.00
Modular	60896	3/14/2024	SMMA - Modular - BSC Group - Survey Consultant Costs	\$156,132.38
Total to Pay to SMMA :				\$354,132.38

Subtotal Modular Invoices	\$431,485.20
Subtotal Hillside Middle School Invoices	\$0.00
Subtotal McLaughlin Middle School Invoices	\$0.00
Subtotal Parkside Middle School Invoices	\$0.00
Subtotal Beech Street Invoices	\$0.00
Subtotal Southside Middle School Invoices	\$0.00
Total of Invoices Submitted	\$431,485.20

DocuSigned by:

David Saindon

54CA1B98E8814C5...

3/16/2024

Recommended by Leftfield Project Manager

Date

Jennifer Gillis

3/27/2024

Approved by Dr. Jennifer Gillis, Superintendent of Schools

Date

Karen DeFrancis

3/27/2024

Approved by Ms. Karen DeFrancis, Chief Financial Officer

Date

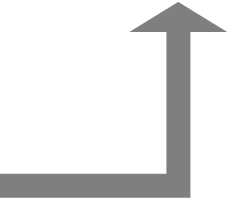


Invoice Process Coordination



PROJECT TEAM INVOICE PROCESS DATES					DISTRICT FINANCE DATES				Calendar Days between End of Month to Check Issuance
Pencil Requisition to Project Team	General Monthly Invoices Due to LeftField	Project Team finalizes CM requisition and assembles all invoices in an invoice packet [assume 7-calendar days]		Invoice packet sent to District for signature [assume 3-calendar days to obtain signature]	2024	Invoice Deadline to Finance	Warrant Signing Date	Check/EFT Date	
		Start	Complete						
					January	Friday, January 5, 2024	Thursday, January 11, 2024	Friday, January 12, 2024	
					February	Friday, February 9, 2024	Thursday, February 15, 2024	Friday, February 16, 2024	
					March	Friday, March 8, 2024	Thursday, March 14, 2024	Friday, March 15, 2024	
	Friday, April 5, 2024	Tuesday, April 2, 2024	Tuesday, April 9, 2024	Tuesday, April 9, 2024	April	Friday, April 12, 2024	Thursday, April 18, 2024	Friday, April 19, 2024	19.00
	Friday, May 3, 2024	Tuesday, April 30, 2024	Tuesday, May 7, 2024	Tuesday, May 7, 2024	May	Friday, May 10, 2024	Thursday, May 16, 2024	Friday, May 17, 2024	17.00
Thursday, May 23, 2024	Friday, May 31, 2024	Tuesday, May 28, 2024	Tuesday, June 4, 2024	Tuesday, June 4, 2024	June	Friday, June 7, 2024	Thursday, June 13, 2024	Friday, June 14, 2024	14.00
Thursday, June 27, 2024	Friday, July 5, 2024	Tuesday, July 2, 2024	Tuesday, July 9, 2024	Tuesday, July 9, 2024	July	Friday, July 12, 2024	Thursday, July 18, 2024	Friday, July 19, 2024	19.00
Thursday, July 25, 2024	Friday, August 2, 2024	Tuesday, July 30, 2024	Tuesday, August 6, 2024	Tuesday, August 6, 2024	August	Friday, August 9, 2024	Thursday, August 15, 2024	Friday, August 16, 2024	16.00
Thursday, August 29, 2024	Friday, September 6, 2024	Tuesday, September 3, 2024	Tuesday, September 10, 2024	Tuesday, September 10, 2024	September	Friday, September 13, 2024	Thursday, September 19, 2024	Friday, September 20, 2024	20.00
Thursday, September 26, 2024	Friday, October 4, 2024	Tuesday, October 1, 2024	Tuesday, October 8, 2024	Tuesday, October 8, 2024	October	Friday, October 11, 2024	Thursday, October 17, 2024	Friday, October 18, 2024	18.00
Thursday, October 31, 2024	Friday, November 8, 2024	Tuesday, November 5, 2024	Tuesday, November 12, 2024	Tuesday, November 12, 2024	November	Friday, November 15, 2024	Thursday, November 21, 2024	Friday, November 22, 2024	22.00
Thursday, November 28, 2024	Friday, December 6, 2024	Tuesday, December 3, 2024	Tuesday, December 10, 2024	Tuesday, December 10, 2024	December	Friday, December 13, 2024	Thursday, December 19, 2024	Friday, December 20, 2024	20.00

Average duration from end of pay period to check issuance from the District is 18 days





Priority 1 Projects | Update Summary

Priority One Projects	Project Phase					
	Programming	Design	CM Procured	Bidding	Construction	Closeout
Modulars	<div><div>100%</div></div>	<div><div>100%</div></div>	<div><div>100%</div></div>	<div><div>80%</div></div>	0%	0%
Beech	<div><div>50%</div></div>	<div><div>0%</div></div>	<div><div>0%</div></div>	<div><div>0%</div></div>	0%	0%
McLaughlin	<div><div>50%</div></div>	<div><div>0%</div></div>	<div><div>0%</div></div>	<div><div>0%</div></div>	0%	0%
Hillside	<div><div>50%</div></div>	<div><div>0%</div></div>	<div><div>0%</div></div>	<div><div>0%</div></div>	0%	0%
Parkside	<div><div>25%</div></div>	<div><div>0%</div></div>	<div><div>0%</div></div>	<div><div>0%</div></div>	0%	0%
Southside	<div><div>25%</div></div>	<div><div>0%</div></div>	<div><div>0%</div></div>	<div><div>0%</div></div>	0%	0%



Modulars Summary Update

Modulars	Project Phase									
	Modular Units Fabricated	Modular Units Infrastructure	Modulars Units Delivered	Modular Units Set	Modular Unit MEP Connections	General Sitework	Eversource Power	FA, Security, Certificate of Occupancy Testing	Modular Furniture, Equipment & Technology	Closeout
Beech	<div><div></div></div> 10%	0%	0%	0%	0%	0%	<div><div></div></div> 5%	0%	0%	0%
McDonough	0%	0%	0%	0%	0%	0%	<div><div></div></div> 5%	0%	0%	0%
McLaughlin	<div><div></div></div> 15%	0%	0%	0%	0%	0%	0%	0%	0%	0%
Hillside	<div><div></div></div> 30%	0%	0%	0%	0%	0%	<div><div></div></div> 5%	0%	0%	0%
Parkside	0%	0%	0%	0%	0%	0%	<div><div></div></div> 5%	0%	0%	0%
Southside	<div><div></div></div> 15%	0%	0%	0%	0%	0%	<div><div></div></div> 5%	0%	0%	0%

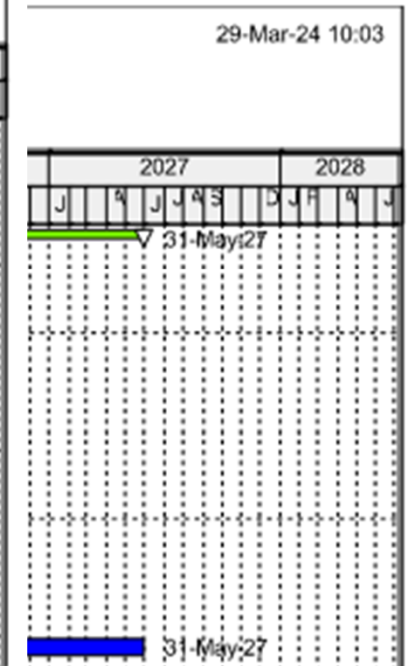
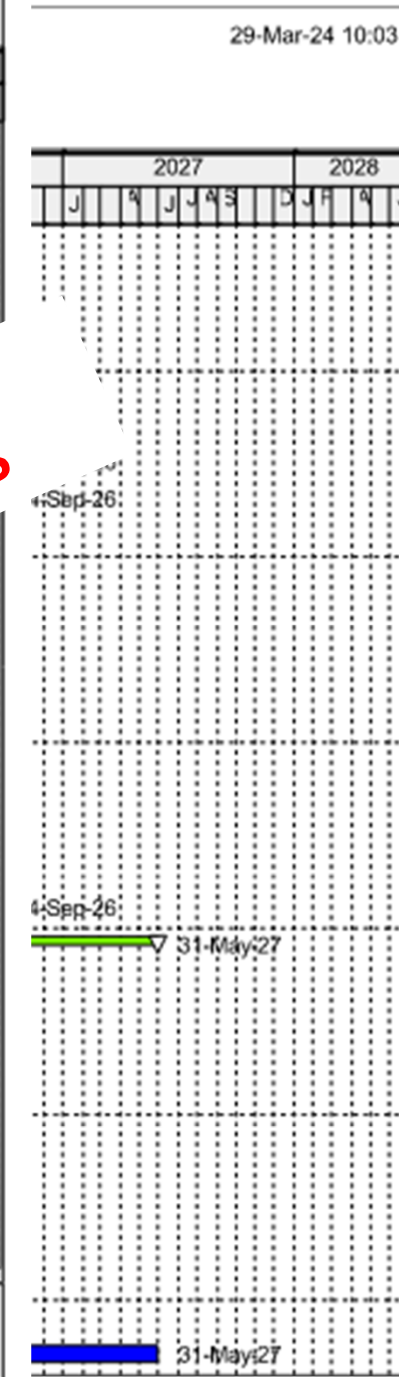
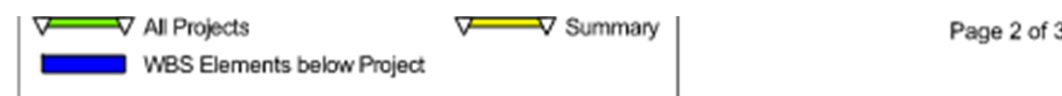
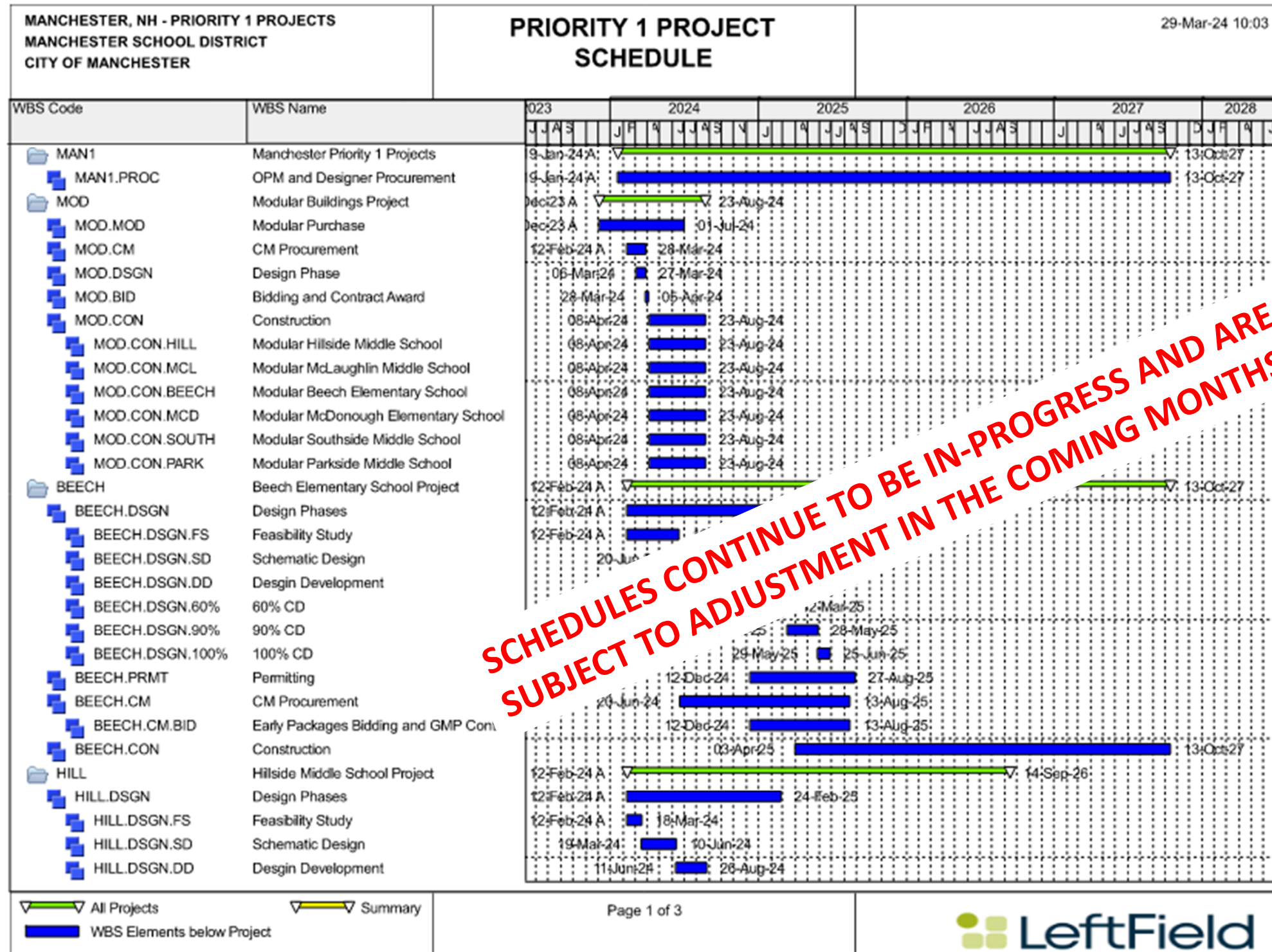
Eversource Summary Update

Modulars	Eversource Journey To Permanent Power						
	Sitewalk	Design	Pole Pad mounted	Work Orders Issued	Confirmation of Delivery *	Transformers, Cabinets Delivered	Power Terminated
Beech	100%	100%	Pole	100%	0%	0%	0%
McDonough	100%	100%	Pole	100%	0%	0%	0%
McLaughlin	100%	50%	TBD	100%	0%	0%	0%
Hillside	100%	100%	Pad	100%	0%	0%	0%
Parkside	100%	100%	Pole	100%	0%	0%	0%
Southside	100%	100%	Pad	100%	0%	0%	0%

* Estimated confirmation of lead times by week of March 25th.



SCHEDULE





THANK YOU!

QUESTIONS & ANSWERS

